

Index Mitral Valve Procedures: Operations (repair or replacement) for primary (degenerative) mitral valve disease with or without concomitant operations.

1) Procedure Type

- a) Include only elective cardiac surgery operations
- b) Include only first-time cardiac surgery (any)
- c) Exclude patients with previous transcatheter mitral procedures
- d) Include only open heart procedures; excludes transcatheter procedures
- e) Include both complex and simple mitral valve repair procedures
- f) Include concomitant mitral valve operation and other cardiac operation

2) Disease Type

- a) Primary (degenerative) with prolapse
- b) Exclude severe mitral annular calcification (MAC) and leaflet calcification
- c) Exclude secondary / functional mitral regurgitation
- d) Exclude endocarditis or trauma.

Procedures should be counted in the following manner, and documentation must be available to demonstrate the following criteria have been met when counting procedures:

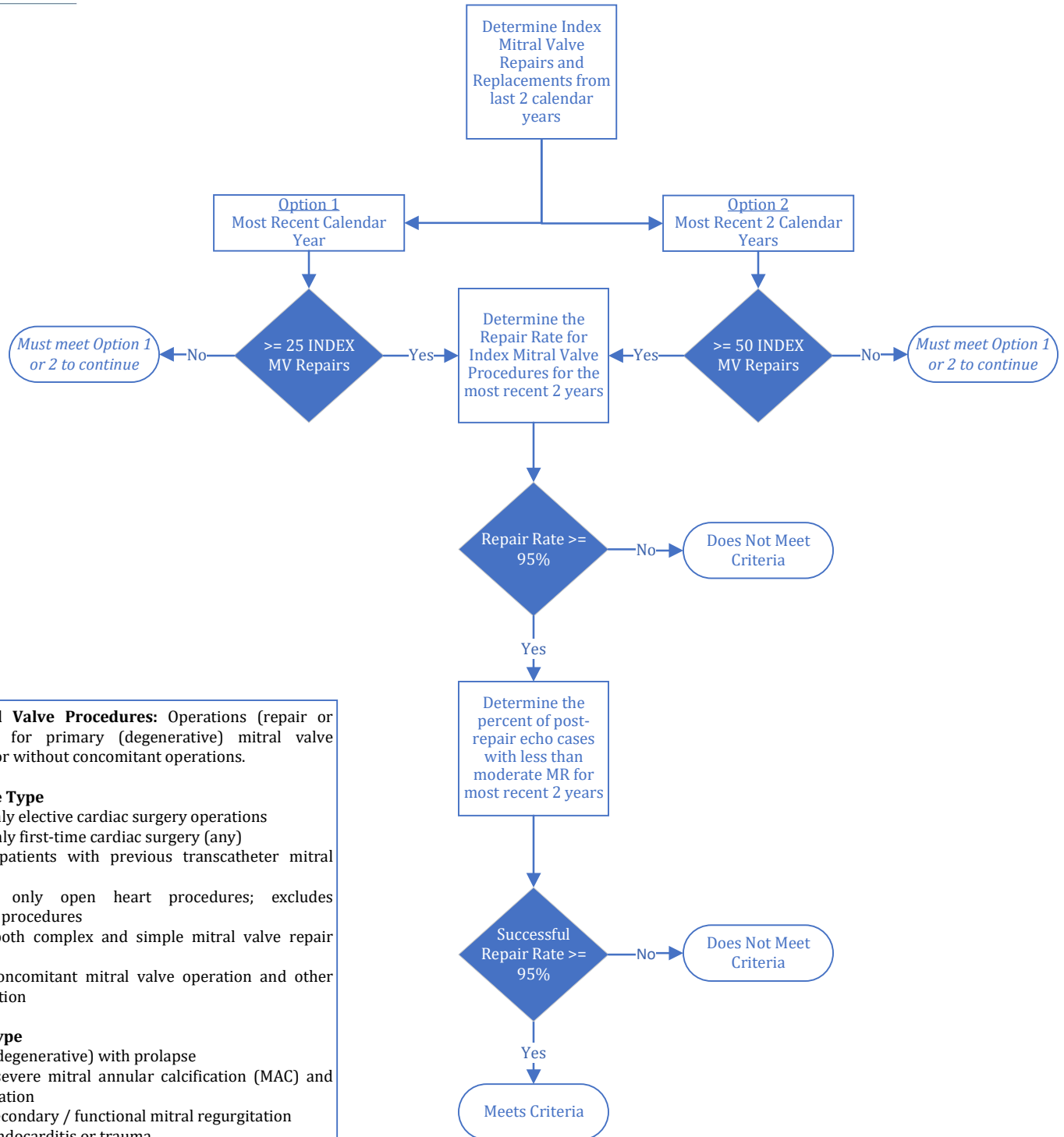
1) Center:

- a) The procedure counts as one procedure for the Center.

2) Reference Surgeon:

- a) Surgeon of record
- b) Counts as primary surgeon or co-surgeon
- c) Only one Reference surgeon can count any one case on their list

¹ Criteria is currently under review.



Index Mitral Valve Procedures: Operations (repair or replacement) for primary (degenerative) mitral valve disease with or without concomitant operations.

1) Procedure Type

- a) Include only elective cardiac surgery operations
- b) Include only first-time cardiac surgery (any)
- c) Exclude patients with previous transcatheter mitral procedures
- d) Include only open heart procedures; excludes transcatheter procedures
- e) Include both complex and simple mitral valve repair procedures
- f) Include concomitant mitral valve operation and other cardiac operation

2) Disease Type

- a) Primary (degenerative) with prolapse
- b) Exclude severe mitral annular calcification (MAC) and leaflet calcification
- c) Exclude secondary / functional mitral regurgitation
- d) Exclude endocarditis or trauma.

Procedures should be counted in the following manner, and documentation must be available to demonstrate the following criteria have been met when counting procedures:

1) Center:

- a) The procedure counts as one procedure for the Center.

2) Reference Surgeon:

- a) Surgeon of record
- b) Counts as primary surgeon or co-surgeon
- c) Only one Reference surgeon can count any one case on their list